

Heavy Duty/Industrial Damper Product Selection Guide

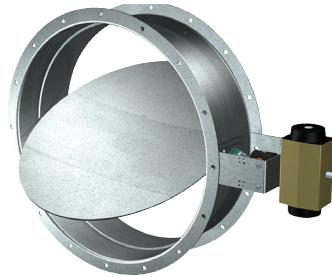


Venco offers a wide variety of products for industrial and severe environment applications. This product selection guide is a quick reference to our heavy duty/industrial offering. In addition to the standard products, Venco's experienced staff can also work with you to develop custom products to meet your application needs. For more information on heavy duty/industrial dampers, visit our website at www.vencoproducts.com or contact your local Venco representatives.

Industrial Round Control - HCDR series

Applications

- Process Control
- Flue Gas Stack
- System Isolation
- Spiral Duct for Larger Sizes
- Dust Collection Systems
- Pneumatic Conveying Systems



Industrial Control - HCD series

Applications

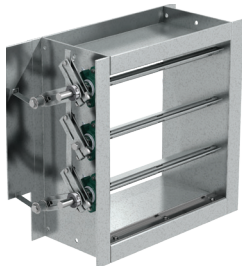
- Air Handling
 - Makeup
 - Return
 - Supply
- Process Control
- Pressure Control
- Isolation - Duct/Fan



| Models | Blade Type | Max. Velocity | Max. Pressure* | Temperature Ranges |
|----------|--------------------|---------------|----------------|--------------------------|
| | | fpm (m/s) | in. wg (kPa) | °F (°C) |
| HCD-120 | 3-V | 3000 (15.2) | 8.5 (2.1) | -40 to 400 (-40 to 204) |
| HCD-130 | Airfoil | 4000 (20.3) | 8.5 (2.1) | -40 to 400 (-40 to 204) |
| HCD-135 | Airfoil- Insulated | 4000 (20.3) | 8.5 (2.1) | -40 to 250 (-40 to 121) |
| HCD-140 | Airfoil | 6000 (30.5) | 6 (1.5) | -40 to 250 (-40 to 121) |
| HCD-220 | 3-V | 4000 (20.3) | 15 (3.7) | -60 to 600 (-51 to 315) |
| HCD-230 | Airfoil | 5000 (25.4) | 15 (3.7) | -60 to 600 (-51 to 315) |
| HCD-240 | Airfoil | 5000 (25.4) | 15 (3.7) | -60 to 250 (-51 to 121) |
| HCD-330 | Airfoil | 5000 (25.4) | 25 (6.2) | -60 to 600 (-51 to 315) |
| HCD-430 | Airfoil | 6000 (30.5) | 35 (8.7) | -60 to 600 (-51 to 315) |
| HCD-530 | Airfoil | 6000 (30.5) | 45 (11.2) | -60 to 600 (-51 to 315) |
| HCDR-050 | Round | 3000 (15.2) | 6 (1.5) | -40 to 250 (-40 to 121) |
| HCDR-150 | Round | 4000 (20.3) | 6 (1.5) | -60 to 400 (-51 to 204) |
| HCDR-152 | 2-blade Round | 4000 (20.3) | 6 (1.5) | -60 to 400 (-51 to 204) |
| HCDR-250 | Round | 5150 (26.2) | 13.5 (3.4) | -60 to 600 (-51 to 315) |
| HCDR-350 | Round | 6400 (32.5) | 20 (5) | -60 to 1000 (-51 to 538) |

Industries Served

- Power Generation
- Paint Booths
- Pollution Control
- General Industry
- Nuclear
- Heavy Manufacturing
- Heat Recovery
- Processing Applications
- Dirty Air Applications
- High Temperature Application



Blast - HBS series

Applications

- Personnel Protection
- Equipment Protection
- Blast Containment

Tornado - HTOD series

Applications

- Personnel Protection
- Duct Protection



| Models | Max. Velocity | Temperature Ranges | Pressure Rise/Decrease |
|----------|---------------|-------------------------|------------------------|
| | fpm (m/s) | °F (°C) | |
| HBS-330 | 6400 (32.5) | -40 to 250 (-40 to 121) | 5.77 psi |
| HBS-331 | 6400 (32.5) | -40 to 250 (-40 to 121) | 5.77 psi |
| HBS-430 | 4000 (20.3) | -40 to 250 (-40 to 121) | 15 psi |
| HBS-431 | 4000 (20.3) | -40 to 250 (-40 to 121) | 15 psi |
| HTOD-330 | 6400 (32.5) | -40 to 250 (-40 to 121) | 3 psi |
| HTOD-331 | 6400 (32.5) | -40 to 250 (-40 to 121) | 3 psi |

* Maximum pressure and velocity are size dependent. Contact Venco for specific information.

Heavy Duty/Industrial Damper Product Selection Guide

Backdraft - HB & HBR series

Applications

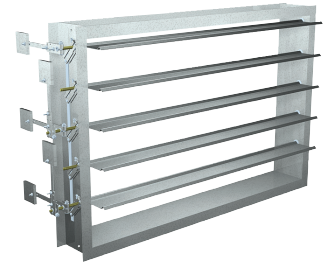
- Blower Outlets
- Branch Duct Isolation
- Industrial Process Isolation
- Emergency Generator Radiator Outlets



Pressure Relief - HPR series

Applications

- Fume Exhaust
- Duct/Plenum Protection
- Nominal Pressure Control

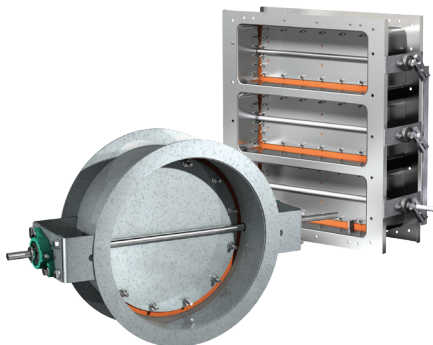


| Models | Max. Back Pressure | Start - Open Pressure | Pressure Relief | Velocity | Temperature Ranges |
|---------|--------------------|-----------------------|-----------------------|-------------|-------------------------|
| | in. wg (kPa) | | | fpm (m/s) | °F (°C) |
| HBR-050 | 6 (1.5) | 0.12 (0.03) | - | 3000 (15.2) | -20 to 250 (-29 to 121) |
| HBR-150 | 6 (1.5) | Consult Factory | - | 4000 (20.3) | -20 to 250 (-29 to 121) |
| HB-110 | 5 (1.2) | 0.02 (0.005) | - | 3900 (20) | -20 to 180 (-29 to 82) |
| HB-120 | 8.5 (2.1) | 0.045 (0.11) | - | 5150 (26) | -20 to 250 (-29 to 121) |
| HB-230 | 13.5 (3.4) | 0.04 (0.01) | - | 5150 (26) | -40 to 250 (-40 to 121) |
| HB-240 | 13.5 (3.4) | 0.04 (0.01) | - | 5150 (26) | -40 to 250 (-40 to 121) |
| HB-330 | 20 (5) | 0.25 (0.06) | - | 6400 (33) | -40 to 250 (-40 to 121) |
| HPR-120 | 8.5 (2.1) | - | 0.1 - 2 (0.02 - 0.5) | 5150 (26) | -20 to 250 (-29 to 121) |
| HPR-230 | 13.5 (3.4) | - | 0.25 - 4 (0.06 - 1) | 5150 (26) | -40 to 250 (-40 to 121) |
| HPR-330 | 20 (5) | - | 0.50 - 6 (0.12 - 1.5) | 6400 (33) | -40 to 250 (-40 to 121) |

Isolation Control - HCDR-351, HBT, & HBTR Series

Applications

- Clean rooms
- Medical Facilities
- BSL-3 and BSL-4 Laboratories
- Federal Buildings
- Microelectronic Manufacturing
- Bag In Bag Out Filtration



| Models | Max. Velocity | Max. Pressure* | Temperature Ranges | Leakage |
|----------|---------------|----------------|-------------------------|--------------------------------------|
| | fpm (m/s) | in. wg (kPa) | °F (°C) | |
| HCD-221 | 4000 (20.3) | 10 (2.5) | -40 to 400 (-40 to 204) | Less than 1 cfm/sq.ft. @ 1 in.wg |
| HCDR-351 | 6500 (33) | 20 (5) | -60 to 400 (-51 to 204) | Less than 1.5 cfm/sq. ft @ 10 in. wg |
| HBT-221 | 3900 (19.8) | 10 (2.5) | -40 to 250 (-40 to 121) | Bubble Tight |
| HBTR-151 | 3900 (19.8) | 10 (2.5) | -40 to 250 (-40 to 121) | Bubble Tight |
| HBTR-451 | 6500 (33) | 30 (7.5) | -40 to 250 (-40 to 121) | Bubble Tight |
| HBTR-551 | 6500 (33) | 30 (7.5) | -40 to 250 (-40 to 121) | Bubble Tight |

